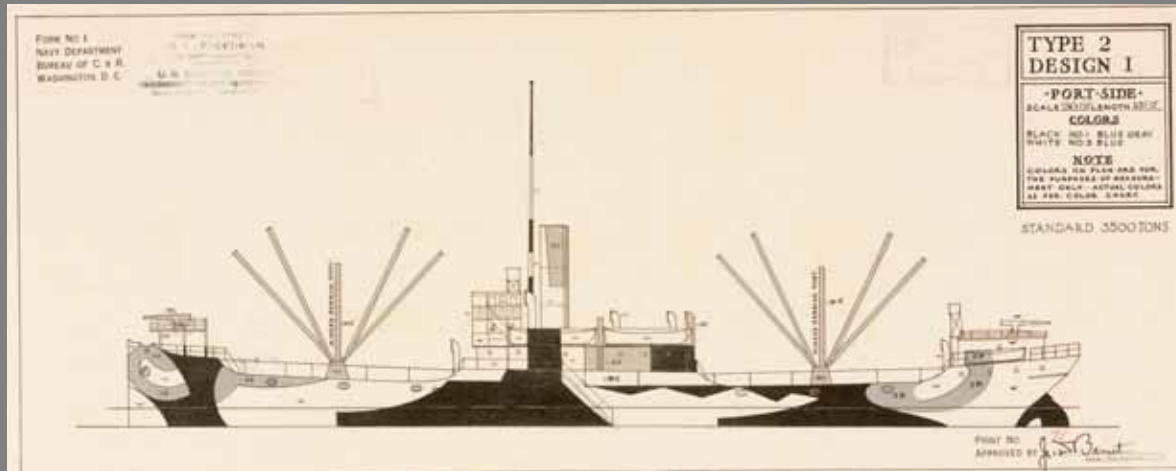




# Type 2 Design I Port Side & SS Everglades



# What is Dazzle?

- Abbot Thayer in his 1909 book “Concealing Coloration in the Animal Kingdom” described camouflage as a way to conceal or disrupt an object. Dazzle is disruptive camouflage (think of a zebra). Military camouflage was developed in World War I by French artists. Ships were hard to camouflage against U-boats because the sea and sky were always changing and of the smoke they produced. Norman Wilkinson, a marine painter who was in the Royal Navy is credited with being the first to develop dazzle camouflage for ships. The Royal Navy allowed him to test his idea. When the test went well Wilkinson was told to proceed, however, he was given no office space. So he went to his alma mater the Royal Academy and was given a classroom. Wilkinson hired Vorticist Edward Wadsworth, to be a port officer in Liverpool, England and oversee the painting of dazzle ships. In 1918 Wilkinson came to United States to share his dazzle plans. 1,000 plans were developed through this partnership.

# SS Everglades



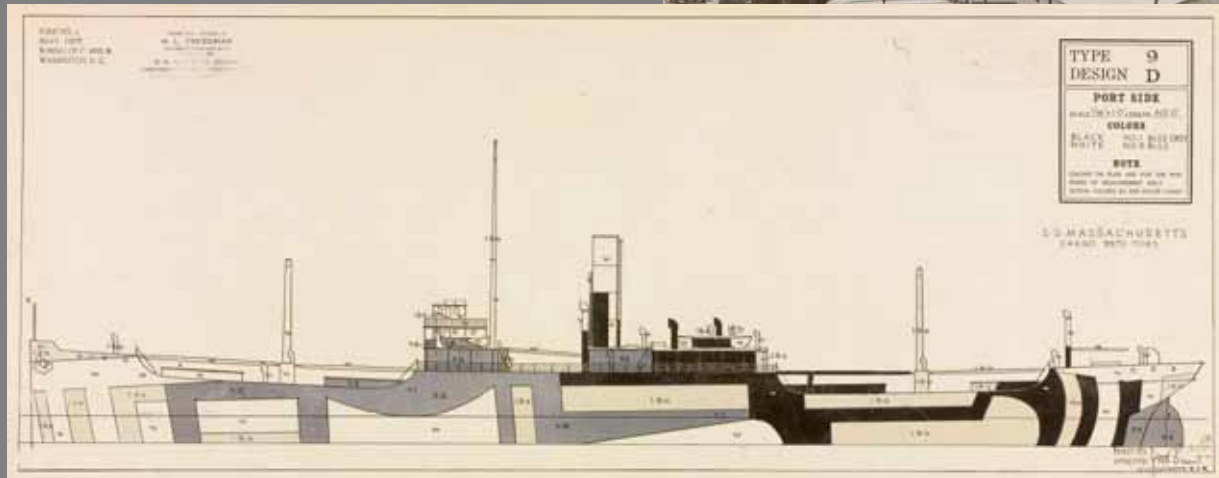
# Did it Work?

- Dazzle and the convoy system were implemented about the same time, so it is hard to say. However, crews on dazzle ships were very proud of the bedazzled camouflage. It was definitely a morale booster. The British and the Americans fully adopted dazzle because at the time they found it to be effectively and it was cheap.

# RISD's Collection

- Maurice L. Freedman was the district camoufleur for the 4<sup>th</sup> district of the U. S. Shipping Board, Emergency Fleet Corporation. The Shipping Board is a precursor to today's Merchant Marines. The Navy gave these plans to each Shipping Board district. Maurice's job was to take the plans and hire painters (artists, house painters) and have the ships painted according to the plans. If the plans needed to be adjusted, this was also his responsibility. Pictures of the ships were taken and witnessed that the plans were carried out appropriately. According to one of the photos from our collection the SS Everglades was the first (merchant) ship launched in the U.S. already camouflaged July 29, 1918 in Florida.

# SS Everglades & Lithopolis



# RISD's Collection

- Maurice came to RISD after the war and studied drawing and painting. He worked in Providence as a commercial artist. He came up with one of the first versions of the game Battleship. In the 1950s he became the Assistant Art Director of Paramount Cards. I lose track of him until the early 1980s with his obituary in Revere, Massachusetts.
- Our collection consists of 455 plans (includes port and starboard sides of a ship) and 20 photos. There are 22 types of ships represented and 10-26 different designs for each of those ships. To date I have only found one other collection of dazzle plans for U. S. merchant ships this being located at the National Archives in Maryland.

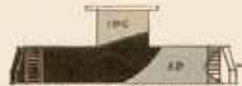
# Type 2 Design I Starboard Side

FORM NO. 1  
NAVY DEPARTMENT  
BUREAU OF C. & R.  
WASHINGTON, D. C.

DESIGNED BY  
W. L. FREEDMAN  
U. S. BUREAU OF C. & R.  
WASHINGTON, D. C.



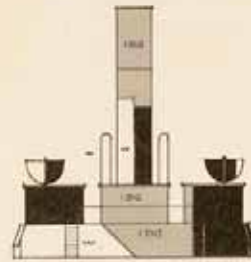
BOW  
SHOWING JOIN OF PATTERN



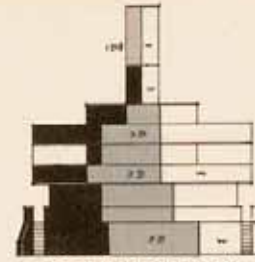
BREAK OF POOP  
LOOKING AFT



FO' CASTLE HEAD



AFT SIDE OF MIDSHIP SUPERSTRUCTURE  
LOOKING FORWARD



FORE SIDE OF BRIDGE  
LOOKING AFT

## TYPE 2 DESIGN I

STARBOARD SIDE  
SCALE 1/4" = 10' LENGTH 251' 0"

### COLORS

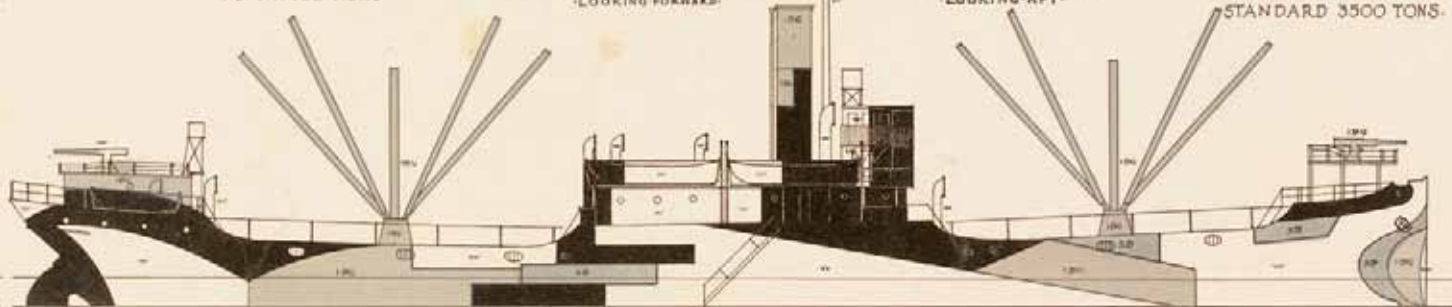
BLACK NO. 1 BLUE GRAY  
WHITE NO. 3 BLUE

### NOTE

COLORS ON PLAN ARE FOR  
THE PURPOSES OF MEASURE-  
MENT ONLY - ACTUAL COLORS  
AS PER COLOR CHART.



STERN LOOKING FORWARD  
SHOWING JOIN OF PATTERN



STANDARD 3500 TONS.

PRINT NO. 7/  
APPROVED BY *J. D. Beut*  
SEAL CONTRACTING U. S. A.

# Collection Background

- Unique collection in terms of subject matter and oversize format
- Regularly requested collection – used in teaching 2-D design camouflage assignments
- Low visibility collection- knowledge is by word of mouth
- Housed in Special Collections
- In need of an inventory & preservation



# Library Background

- Visual Resources transitioning from slides to digital
- Hired new VR librarian June 2007
- MDID up & running in January 2008



# April 2007 - Project Proposal questions to be answered

- Establish copyright- RISD Library owns the collection, images are in public domain
- Preservation issues: 1) assess condition of the original prints and 2) create archival quality digital files
- Digital capture - in-house & archival
- How to get the work done without additional funding or staff
- Cataloging-metadata schema
- Once digitized: where will the digital collection reside and how can it be accessed?
- Long term maintenance & accessibility of digital files
- Publicity-getting the word out
- Increased demand-will the originals continue to be handled?
- Review the project-what did we learn?

# Preservation Concerns

- Originals are oversized, color lithographs - fragile & acidic
- Need for better storage of originals
- Should the originals continue to be handled?
- Shall we make preservation copies?
- What are the costs of printing 455 images?

QuickTime™ and a  
TIFF (Uncompressed) decompressor  
are needed to see this picture.

# Digital Capture

- Original plan - use oversize faceup scanner in Special Collections
- Fortuitous offer from RISD Museum staff to provide photographic services for the Dazzle project in return for library storage space granted during the building of a new museum addition (summer 2007)
- Used the photography process to inventory the collection (455 prints, 20 bl& wh photos)
- 4 channel /16 bit color, Imacon Ixpress 384 digital system
- Master tiffs archived on MAM-A gold dvds, backed up on museum server

# Doing the Work



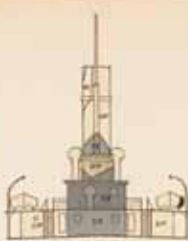
- Use existing staff -2 librarians, students assistants, library interns
- Work closely with Visual Resources Librarian to create metadata template
- Learn MDID - utilize search/browse functions; create controlled lists
- The work gets done in-between other duties, as time allows
- Formed an informal digital collections group to draft standards & guidelines for digital collections across campus

# Cataloging the Dazzle Prints

- Use Dublin Core as the metadata schema
- Catalog directly into MDID
- Relate the two profile designs of each ship, Port and Starboard by linking the records
- Use the Format field to describe the unique visual aspects of the Dazzle prints- Palettes and Patterns
- Creative Commons/Attribution license

FORM NO. 1  
NAVY DEPARTMENT  
BUREAU OF C. & M.  
WASHINGTON, D. C.

DESIGNED BY  
R. S. PRITCHARD  
DRAWN BY  
C. S. BROWN  
CHECKED BY  
W. H. GIBSON



TYPE 21  
DESIGN A

STARBOARD SIDE

SCALE: 1/4" = 10' LENGTH 100'-0"

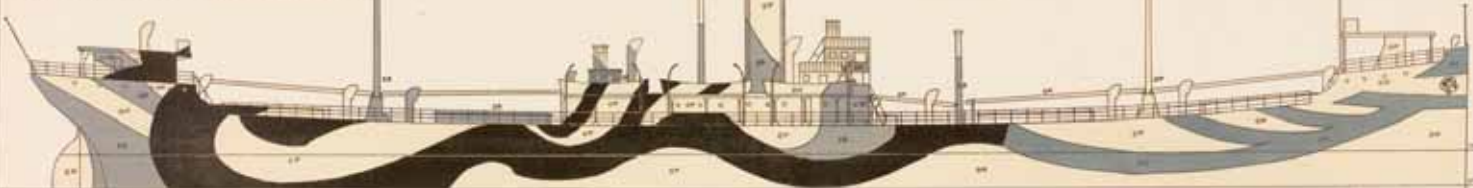
**COLORS**  
BLACK NO. 7 BLUE  
GRAY WHITE NO. 4 GRAY

**NOTE**  
COLORS ON PLAN ARE FOR THE PURPOSE OF MEASUREMENT ONLY  
ACTUAL COLORS AS PER COLOR CHART

DISPLACEMENT 1400 TONS

VIEW SHOWING GUN BY BUTTER

VIEW SHOWING MAINMAST BY BUTTER



SCALE: 1/4" = 10' LENGTH 100'-0"

PRINT NO. 100-1000  
APPROVED BY: J. B. Smith

FORM NO. 1  
NAVY DEPARTMENT  
BUREAU OF C. & M.  
WASHINGTON, D. C.

DESIGNED BY  
R. S. PRITCHARD  
DRAWN BY  
C. S. BROWN  
CHECKED BY  
W. H. GIBSON

TYPE 21  
DESIGN A

PORT SIDE

SCALE: 1/4" = 10' LENGTH 100'-0"

**COLORS**  
BLACK NO. 7 BLUE  
GRAY WHITE NO. 4 GRAY

**NOTE**  
COLORS ON PLAN ARE FOR THE PURPOSE OF MEASUREMENT ONLY  
ACTUAL COLORS AS PER COLOR CHART

DISPLACEMENT 1400 TONS

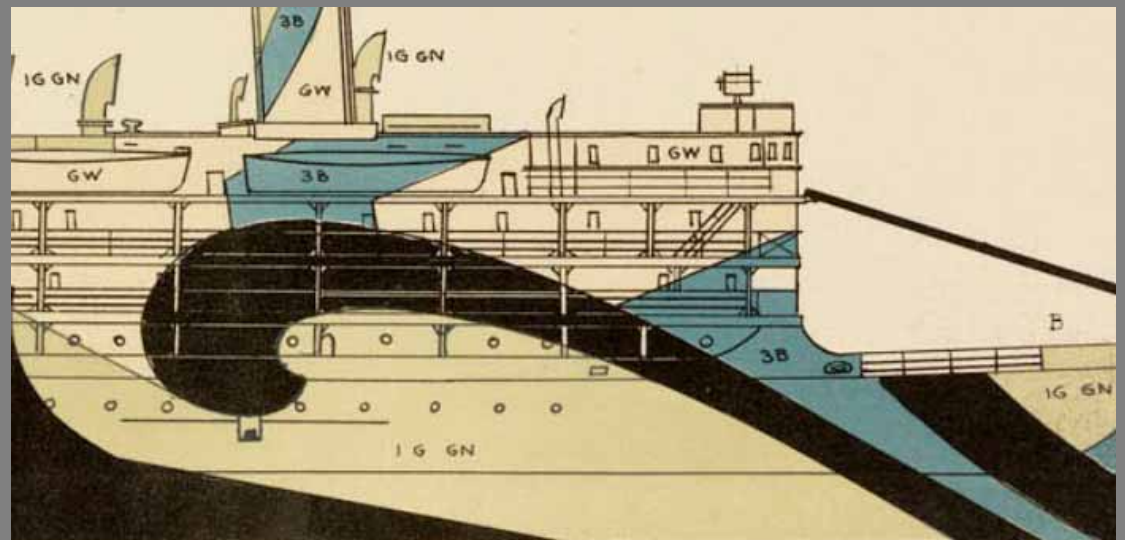


SCALE: 1/4" = 10' LENGTH 100'-0"

PRINT NO. 100-1000  
APPROVED BY: J. B. Smith

# Unique visual aspects - Color Palette

- Palette – appears in the upper right hand corner of each print
- Colors designated on prints in paint-by-number style
- Total of 10 colors used throughout. 2-5 colors used on each ship. 57 palettes total.



# Unique visual aspect - Dazzle Patterns

- Create a controlled vocabulary for the pattern names
- Create an index of patterns
- Record the patterns, from front to back within each print



# Patterns Index

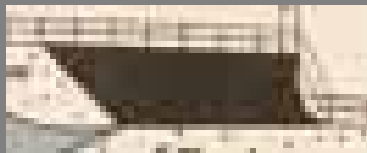
arc



sharktooth



block



stripe



drop



triangle



fork



wave



houndstooth



zigzag



# Project Status & Future Plans

- Finish Patterns Indexing, Summer 2008
- Create individual archival folders to house the originals
- Create Dazzle Collection website, Summer 2008
- Post-project review
- Introduce MDID & Dazzle Collection to RISD community, Fall 2008
- Exhibition & Dazzle symposium at RISD slated for Feb 2009

# Thanks to:

## Library Interns

- Isabel Lopes, digital photography sessions
- Karen Tercho, Pattern index
- Greg Wallace, Palette index

## RISD Staff

- Denise Bastien, Collection Information Specialist, RISD Museum
- Eric Gould, Museum photographer
- Andy Martinez, Archivist
- Marta Bustillo, Visual Resources Librarian
- RISD Library Student Assistants



# Contacts

- Claudia Covert, ccovert@risd.edu
- Ellen Petraits, epetrait@risd.edu

